



HOUSE ON EDGE

Category: Residential, Home-stay.

Location:

Year: 2015

Area: 653 Sq.m.

Many farms many houses, this is what we see in today's scenario, but in case in early hamlets or villages people used to stay together while their farms used to be outside the villages. With time this scenario has changed and to reduce the clockwise distance and to control the activities in the farm people have started living around the farms. This has given an opportunity to explore an identity of a typology of a house perceiving the activities and the built form of the region.

Now talking about a village/settlement/hamlet, it is an assembly of many dwelling units where openness is always explored to the extent and boundaries are decided not by designated bindings like walls, compounds etc. these spaces are always shared where one could leander through these spaces. This character itself gives a freedom for the user to enter in from anywhere; also it gives a different dimension for the uses of spaces because of which open spaces become spaces of primary importance. Now these are the learning's from the villages/settlements.

This house we considered as an opportunity to explore an identity of a house, which would be on the edge of a street and a farm where it will create a bond between street edge and the dynamic farmlands. So a building becomes an identity of a pivotal importance where it disseminates, one, from the activities of farming where it functions as a barrier between the farmland and the street, also at the same time this building becomes a participant with the dynamic of nature.

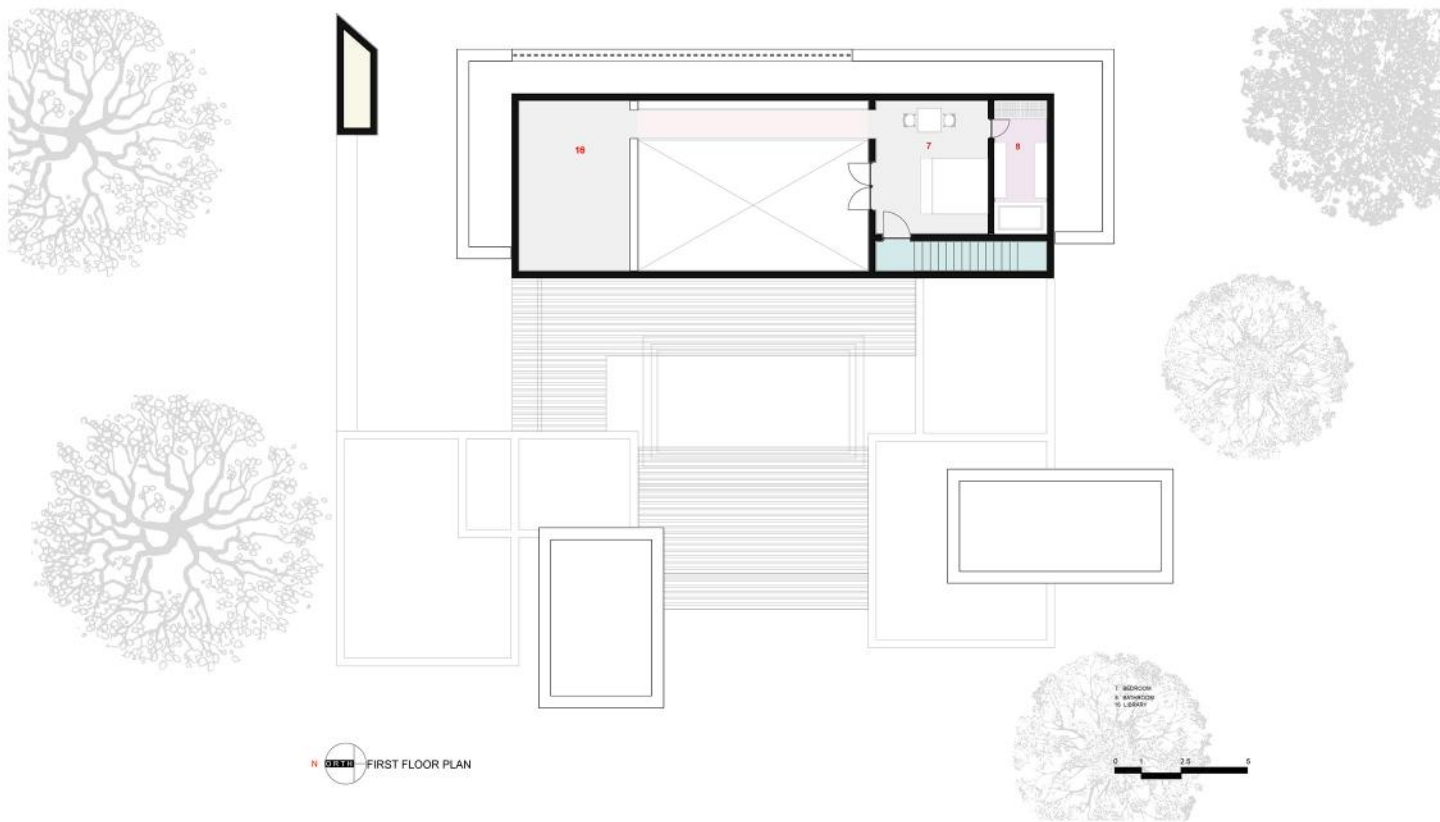
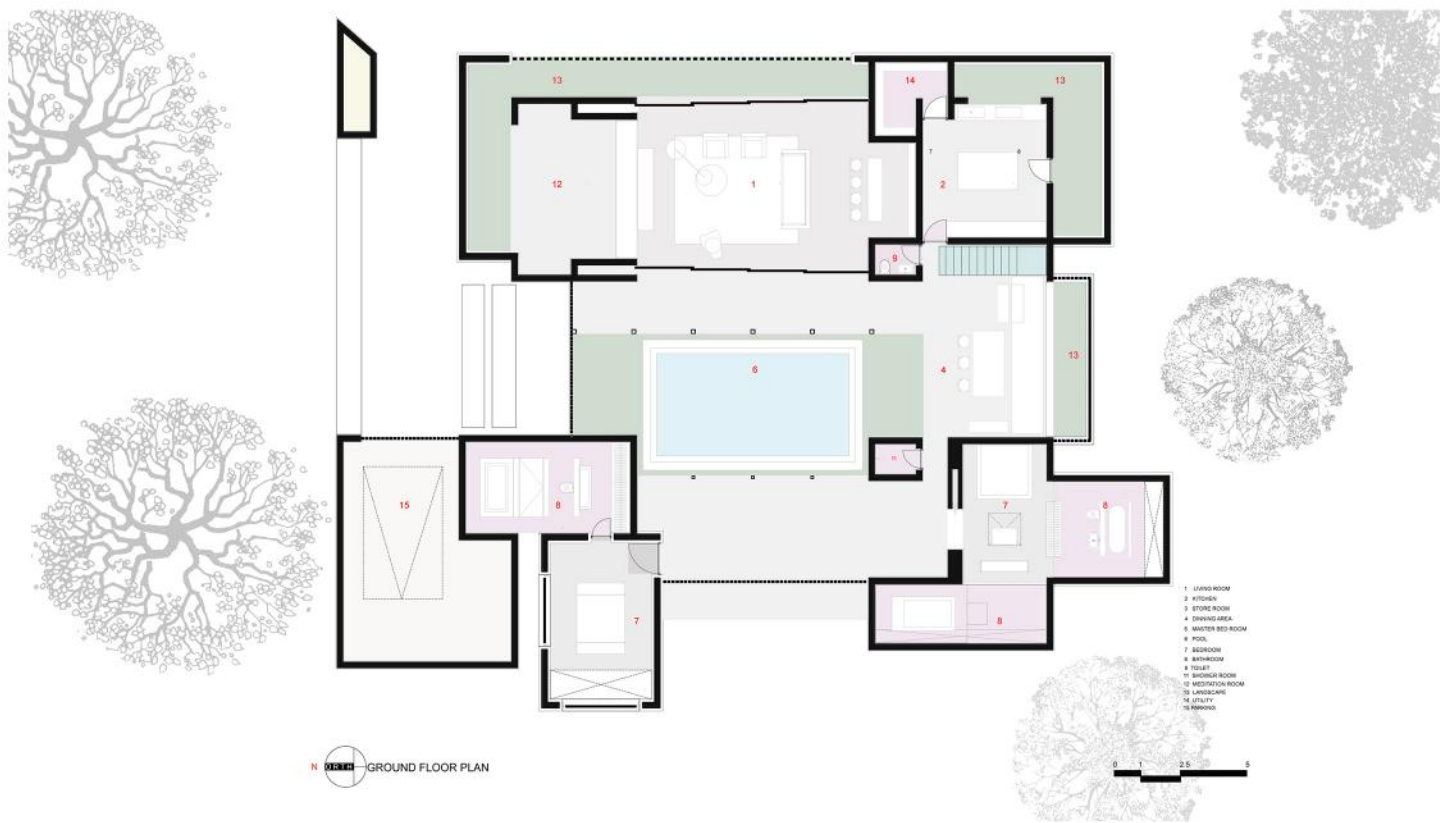
The whole idea of this proposal to explore a typology where it will give freedom to openness to promote various use in space (kinetic space). This house appears like a definition between street and farm forming an edge between, where it holds character like a shell (fort wall) while from the farm side it appears more sort of a porous house.

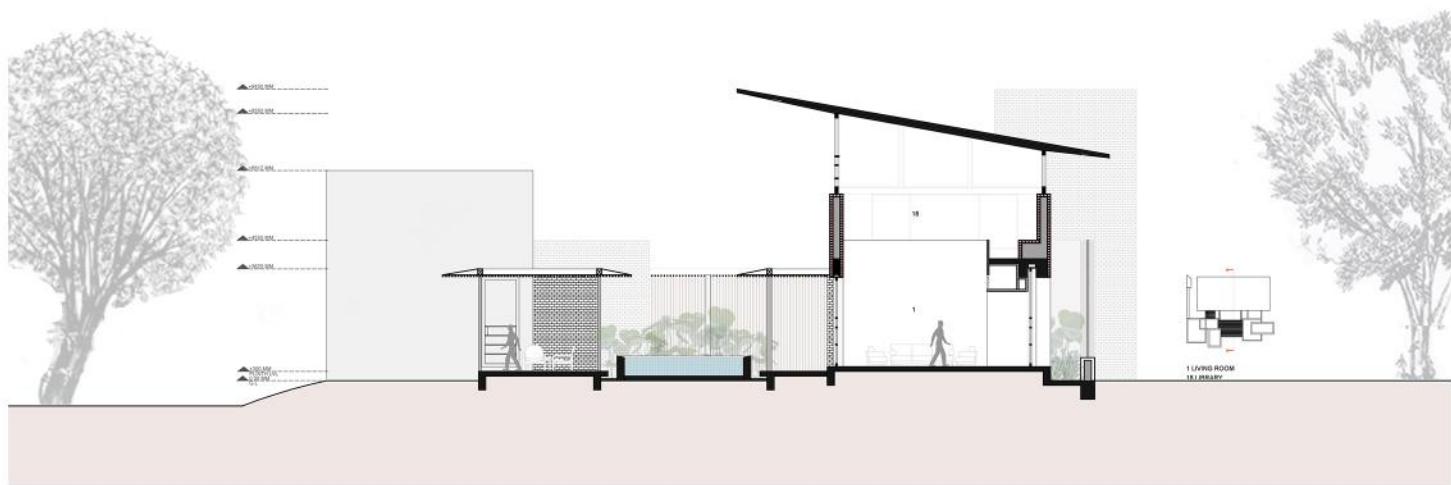
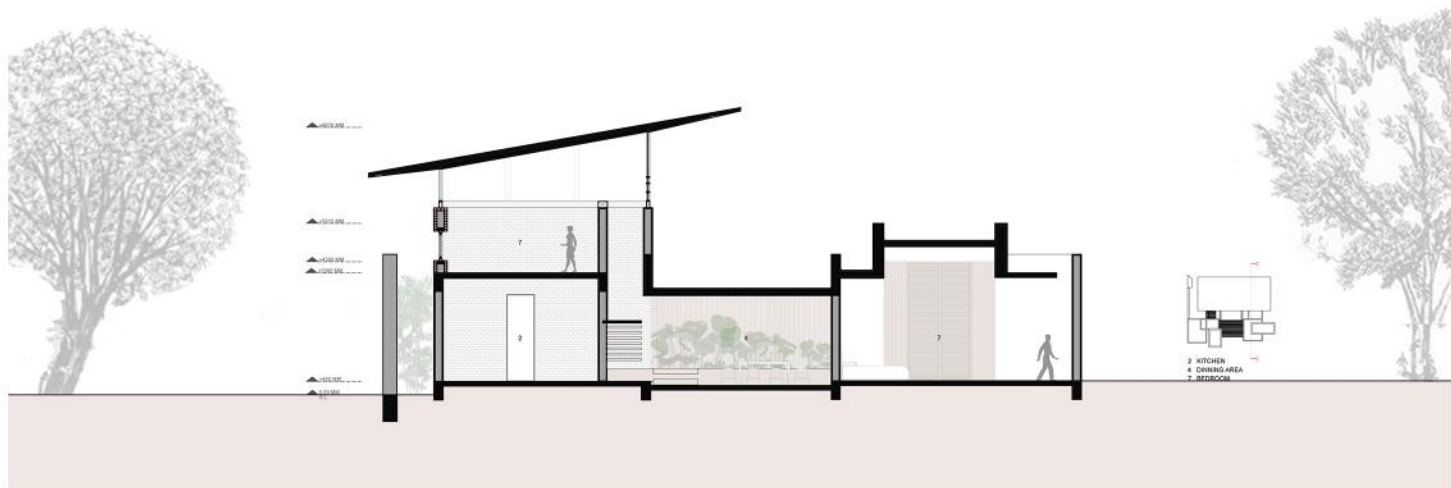
One can see in the plan that the fingers of this house more sort of penetrating towards the farm, while moving towards the street and the house shows a sense of security. The attitude of this house is such that the house shows its back to the street while it shows a face towards the activities happening in the farm. Hence it appears like a threshold to the farm. Footprint of this house is restricted around the street keeping maximum area available for farming where the house appears an elongated one along the street. Thus, it gives a definition like an edge to the house.











[ANTI] GRAVITY HOUSE.

Category: Residential.
Location: Nasik
Year: 2017
Area: 507 Sq.m.

[Anti] gravity House is located in Nasik, in state of Maharashtra, India. This project was built in response to a proposal received, which eluded a residence for a joint family of an industrialist in a region with a tropical wet and dry climate.

The whole conception of design started from questioning basic principles of engineering. Basics of engineering originate from gravity. Gravity is the force that attracts objects towards the center of the earth.

Therefore, the design was conceptualized with an imaginary inception that, what if earth's gravity reduces by some amount, would all elements appear to be floating?

So intentionally an attempt was made to design the elements that would appear to be floating inside the structure.

The entry of the structure is characterized by a floating staircase inside a glass foyer that leads to the upper story. This upper story is characterized by a gigantic living space with a robust appearance and the character of this space is conceived as the industrial one. Skylights provided through the roof add kinesthetic to the space. During the night the whole picture inverses where space turns into a part of starry night. One gets amazed by the presence of a black floating mass of a prayer space and lined from outside it is black with a wooden skin from inside that adds to the grace of it.

A level above, a fascinating corner for booklovers, i.e. a library with a seating gives a sense of tranquility, that further over looks into the living room which adds vibrancy to the scale of it.

A flight of staircase adjacent to the living on the second floor opens into the landscaped terrace. One can be see the beauty of landscape with changing sky while climbing up through a stairwell.

Visuals of the building are influenced by the sculptor Jorge Yazpik, where building appears like a crafted volume of concrete and adorned with a presence of copper and wooden lattices. This gives a quality of cave, where first human settlement flourished, which gives enough opportunity to explore the expression.

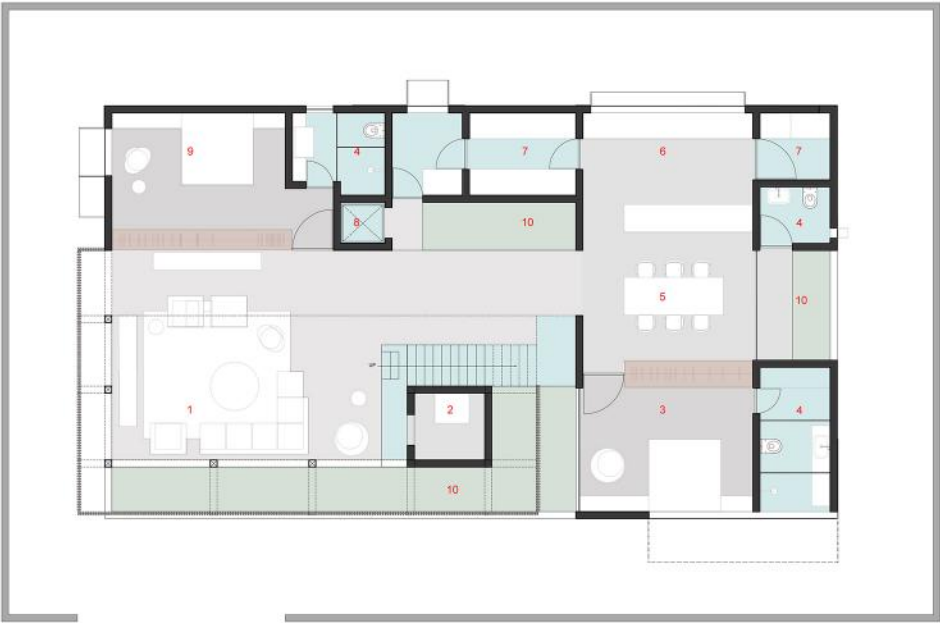
The inside of the house is characterized by a variety of volumes of crafted concrete, where it resembles to the quality of monolithic stone buildings like Kailasa/ temples of Hampi. This quality gives an opportunity to light to fill the volume and to show variety of patterns and gestures.
This gives meditative as well jubilant quality to the space.

The whole synthesis and process of design talks about, toying with the various principles of science (engineering), metaphorically it appears impossible that has made possible, hence this clarifies the name [Anti] Gravity given to it.

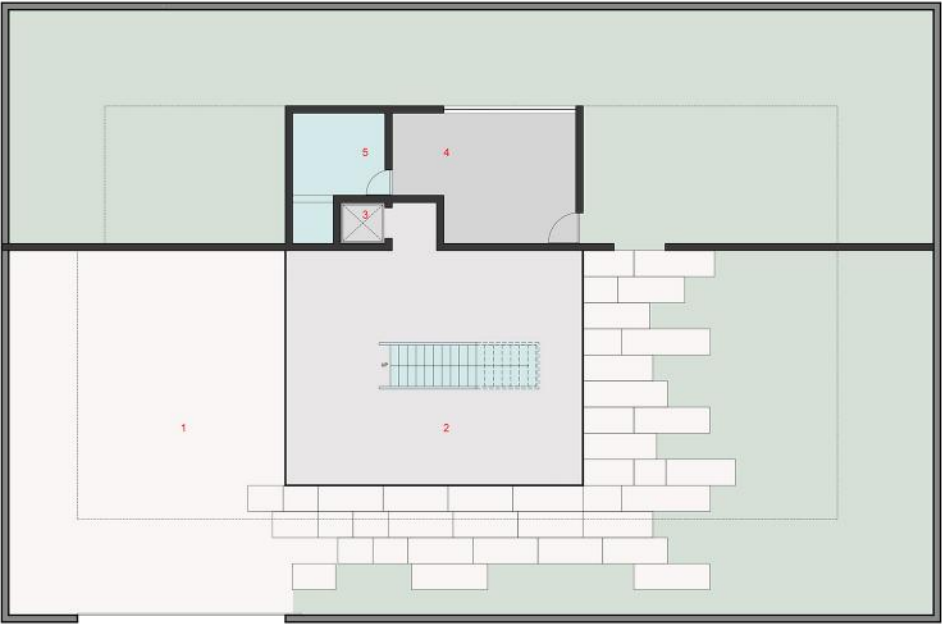








 FIRST FLOOR PLAN



 GROUND FLOOR PLAN





- 1 BEDROOM
- 2 WALK IN WARDROBE
- 3 LIFT
- 4 TOILET
- 5 LANDSCAPE TERRACE



THIRD FLOOR PLAN



- 1 FAMILY LIVING AND LIBRARY
- 2 TOILET
- 3 LIFT
- 4 WALK IN WARDROBE
- 5 BEDROOM



SECOND FLOOR PLAN



